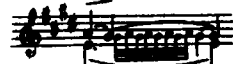


IV Preludium

Andante espressivo (♩ = 92)

a) Trzy jak najłżejszy. Należy natomiast nieco wydatnić e^1 i g^1 , jak gdyby notacja była następująca:  Ta uwaga odnosi się do wszystkich podobnych wypadków.

b) W rękopisach to e^1 nie jest połączone łukiem z e^2 w taktach następnym.

Musical score system 1 (measures 16-19). The system includes a treble clef staff, a bass clef staff, and a smaller bass clef staff below. Measure numbers 16, 17, 18, and 19 are indicated. Fingerings are shown with numbers 1-5. Dynamics include *f*. Articulation marks like accents and slurs are present.

Musical score system 2 (measures 20-23). The system includes a treble clef staff, a bass clef staff, and a smaller bass clef staff below. Measure numbers 20, 21, 22, and 23 are indicated. Fingerings are shown with numbers 1-5. Dynamics include *marc.*, *dim.*, and *p*. Articulation marks like accents and slurs are present.

Musical score system 3 (measures 24-27). The system includes a treble clef staff, a bass clef staff, and a smaller bass clef staff below. Measure numbers 24, 25, 26, and 27 are indicated. Fingerings are shown with numbers 1-5. Dynamics include *cresc.*, *f molto espress.*, and *p*. Articulation marks like accents and slurs are present.

Musical score system 4 (measures 28-31). The system includes a treble clef staff, a bass clef staff, and a smaller bass clef staff below. Measure numbers 28, 29, 30, and 31 are indicated. Fingerings are shown with numbers 1-5. Dynamics include *p cresc.*. Articulation marks like accents and slurs are present.

Musical score system 5 (measures 32-35). The system includes a treble clef staff, a bass clef staff, and a smaller bass clef staff below. Measure numbers 32, 33, 34, and 35 are indicated. Fingerings are shown with numbers 1-5. Dynamics include *f molta voce e largam.*, *poco rit.*, and *a tempo*. Articulation marks like accents and slurs are present.

Musical score system 6 (measures 36-39). The system includes a treble clef staff, a bass clef staff, and a smaller bass clef staff below. Measure numbers 36, 37, 38, and 39 are indicated. Fingerings are shown with numbers 1-5. Dynamics include *f* and *p*. Articulation marks like accents and slurs are present.

IV Fuga

Moderato (♩=100)

(a 5 voci)

p solenne

molto sottov. il Controsoggetto

T 2 ben marc.

mf

Tema

Kontrapunkt

II kontrapunkt (t. 35 i nast.)

III kontrapunkt (t. 49-50)

a) Uwypatnienie każdego pojawienia się tematu przy zachowaniu stałego piano jest sprawą umiejętności wykonawcy.

legatiss. uguale e sotto voce

32

p

38

marc. ma sempre p

un poco cresc.

b)

43

mf

p ben marc. ma sotto voce

48

53

58

p un poco cresc.

b) W niektórych rękopisach ten takt jest nieco zmodyfikowany. Redaktor woli wersję tu przyjętą, ponieważ jest bardzo interesująca pod względem harmonicznym.

63

mf cresc. a poco a poco

68

sempre cresc.

73

ff

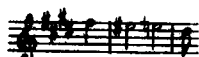
78

dim.

83

mf sempre dim.

c) Ten chromaticznie opadający motyw:



towarzyszy III kontrapunktowi tu i w t. 69, 71 i 103.

88 *p* *cresc. a poco*

This system contains measures 88 through 92. It features a treble and bass staff with complex fingering and articulation. The treble staff includes slurs and accents, while the bass staff has many slurs and fingerings. The dynamic starts at *p* and increases to *cresc. a poco*.

93 *a poco*

This system contains measures 93 through 97. The treble staff has a slur over measures 93-94 and another over 95-97. The bass staff has a slur over measures 93-94 and another over 95-97. The dynamic is *a poco*.

98 *f* *sempre cresc.*

This system contains measures 98 through 102. The treble staff has a slur over measures 98-100 and another over 101-102. The bass staff has a slur over measures 98-100 and another over 101-102. The dynamic is *f* and the instruction is *sempre cresc.*

103 *ff*

This system contains measures 103 through 108. The treble staff has a slur over measures 103-105 and another over 106-108. The bass staff has a slur over measures 103-105 and another over 106-108. The dynamic is *ff*.

109 *un poco rall.* *largamente e sempre rall.* *p* *pp*

This system contains measures 109 through 113. The treble staff has a slur over measures 109-111 and another over 112-113. The bass staff has a slur over measures 109-111 and another over 112-113. The dynamic starts at *p* and ends at *pp*. The instructions are *un poco rall.* and *largamente e sempre rall.*